

1. List of familiar organisms (with pictures)

Shark



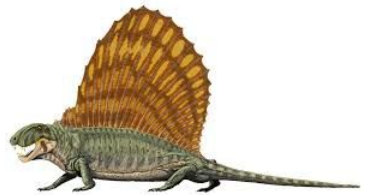
Tuna fish



Frog



Dimetrodon



Human



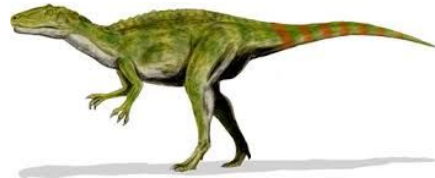
Whale



Crocodile



Saurischian



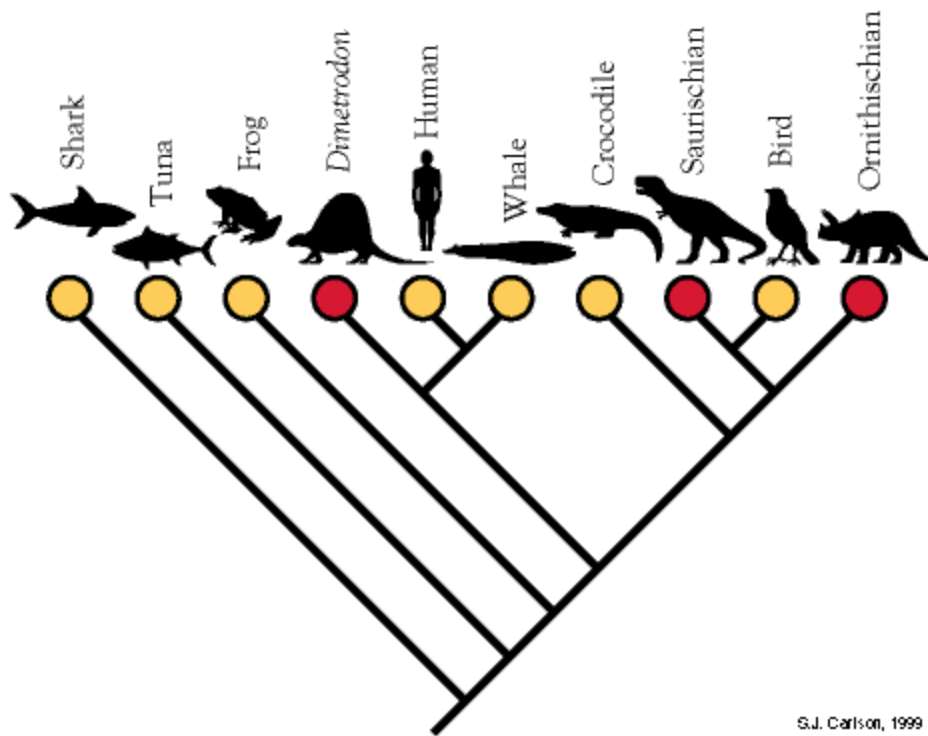
Bird



Ornithischian



2. Cladogram 1:



What does this cladogram teach us?

What questions do you still have?

3)

## **Attachment 6**

## **Attachment 7**

## **Attachment 8**

## **Attachment 9**

## Attachment 10

<p>3 = Meeting skill                  2 = Approaching skill                  1 = Little progress shown</p>	<p><b>Learning Skills</b></p>
<p>S.6 Clearly explains thinking</p>	
<p><input type="checkbox"/> Analysis #1</p>	
<p><input type="checkbox"/> Analysis #2</p>	
<p><input type="checkbox"/> Analysis #3</p>	
<p>S.7 Attends to detail</p>	
<p>3 = Meeting standard. Demonstrates solid knowledge and understanding.                  2 = Approaching standard. Demonstrates progress toward grade level standard but not yet at standard.                  1 = Not meeting grade level standard. Showing minimal progress.</p>	<p><b>Content Standard</b></p>
<p><b>6.MS-LS4-2. Construct an argument using anatomical structures to support evolutionary relationships among and between fossil organisms and modern organisms.</b></p>	