


CELL WEBQUEST

Name _____

Date _____ Period ____

- 1) Go to: www.cellsalive.com

How Big Is A Cell?

- 2) Across the top, CLICK on “Explore” to get a drop-down menu.
- 3) CLICK ON “How Big?”
- 4) CLICK ON  Check out how big/small some of these objects are using the **GREEN arrows** next to “Magnification.”!!!
- 5) Put the following items in number order from biggest (1) to smallest (6):

_____ Ebola Virus (flesh eating virus)

_____ Human Hair


_____ Head of Pin

_____ Dust Mite

_____ E. Coli (bacteria in food)

_____ Red Blood Cell

Cell Structures

- 6) Across the top, CLICK on “Explore” to get a drop-down menu.
- 7) CLICK ON “Cell Models.”
- 8) CLICK on the image under “Eukaryotic Organelles.”
- 9) CLICK ON 
- 10) Choose and CLICK on “Animal Cell” at the bottom.

Animal Cells

- 11) Write 2 facts from this page about these cell parts AND draw each part in the square provided:

1) Nucleus
♦ -



2) Cell Membrane
♦ -



◆ -
3) Mitochondrion

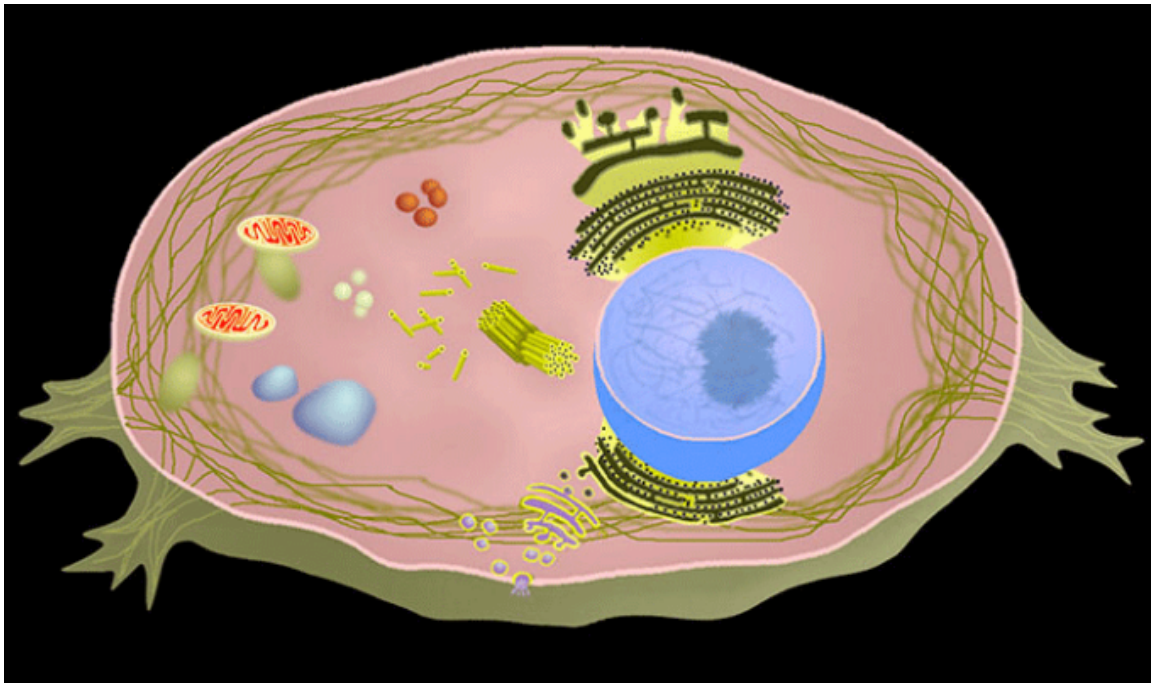
◆ -
4) Vacuole

◆ -

12) GO BACK to the “Eukaryotic Organelle Cell Models” page.

LABEL the Animal Cell diagram:

- Cell membrane
- Nucleus
- Mitochondrion
- Vacuole



Plant Cells

START THE ANIMATION

13) CLICK ON

14) Choose and CLICK on "Plant Cell" at the bottom.

15) Write 2 facts from this page about these cell parts AND draw each part in the square provided:

1) Cell Wall

◆ -

◆ -

2) Chloroplast

◆ -

◆ -



LABEL the Plant Cell diagram:

- Cell membrane
- Nucleus
- Mitochondrion
- Vacuole
- Cell wall
- chloroplast

