

READ THE CASE:



Stidham's Private I's ...Inference Investigators

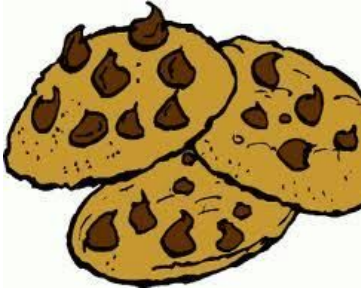
Scenario #1 The Case of the Cookie Money Snatcher

It is almost time for lunch one afternoon and all morning you have been dreaming about the delicious chocolate chip cookies that the cafeteria sells. You have held on tightly to your \$0.60 all day so you can buy a cookie at lunch.

Mrs. Stidham announces for everyone to go to their lockers. However, while you are in the hallway you realize that you left your cookie money on your desk. You race back to the room and you see that your money has been taken. Next to your desk is an empty Stride gum wrapper and a girl's hair ribbon. You also notice that your desk is sticky to the touch.

The only student who was in the room when the money disappeared was Bossy Beatrice. She insists that she did not take the money but says that Fearful Frieda and Hungry Harry were seen near your desk on their way out.

Make observations and inferences and help solve the case.



Observations

The Case of the Carter Woodson Cookie Snatcher

First make observations about each suspect and then make inferences based on your observation. Remember, observations are anything we can taste, hear, see, touch, or smell. Inferences are what we think because of our observations.

What observations can you make based on the information in the story above?



Bossy Beatrice

Loves telling other people what to do. When she's not bossing others around, she has her nose stuck in a book. She is seen eating cookies on most days at lunch.

Alibi: She claims, as she blows a giant bubble, that she was reading the entire time the class was at their lockers. However, she stopped long enough to realize that Fearful Frieda was near your desk.

1. Observations about Bossy Beatrice

Inference:



Fearful Frieda

Is very quiet and keeps to herself. She doesn't have many friends but is always very nice to others. Her family is poor and she doesn't have a lot of money to buy snacks at lunch. She sits next to Bossy Beatrice.

Alibi: She claims she was at her locker and then went to the bathroom to wash her hands. They were sticky from her snack she had eaten earlier. Other students saw her in the bathroom, but not her locker.

2. Observations about Fearful Frieda

Inference:



Hungry Harry

Is a small boy with a BIG appetite. Harry is always eating and sometimes eats two meals at lunch. His favorite part of lunch is the cookies. He has stolen from students before.

Alibi: Claims he was not the last one out of the classroom, Frieda was. He also shows you that he has extra money today to buy whatever snacks and food he wants.

3. Observations about Hungry Harry

Inference:



Final Inference

Based on my observations, I infer that

_____ is

the thief. I believe this because



Stidham's Private I's ...Inference Investigators

Scenario #2 The Case of the Broadway Burglar

You are walking up W. Broadway after school one hot and very sunny afternoon. You are so thirsty and know that you cannot walk any further until you stop at 7-Eleven to get a Big Gulp. However, as you get closer to the 7-Eleven you see a lot of police cars at a nearby house and hear an ambulance coming closer.

You realize that the house belongs to one of your classmates Johnny. He is standing in his front yard and tells you that his grandmother, who lives with him, claims she was robbed and hit over the head with a stick of some sort. Since she was knocked unconscious, she is not sure who the robber is but knows they were eating something cheesy because of a greasy cheese substance that was found on the doorknob above the doggy door in the kitchen.

She is also not sure how the robber got in the house because all the doors were locked and there weren't any windows that were broken.

Your job is to help the police interview suspects and solve the case of the Broadway Burglar!

Make observations and inferences and help solve the case.

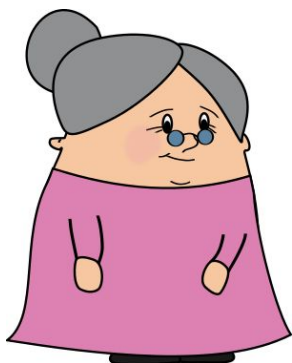


Observations

The Case of the Broadway Burglar

First make observations about each suspect and then make inferences based on your observation. Remember, observations are anything we can taste, hear, see, touch, or smell. Inferences are what we think because of our observations.

What observations can you make based on the information that you are given at first?



Nosy Nelly

Lives next door to Johnny and is always asking around town about the latest gossip.

Alibi: She claims that there is no way it could have been her because she had knee surgery three weeks ago and can't move around well without her cane. She was sitting in her Lazy Boy eating Doritos and watching Maury. However, no one was home with her at the time.

1. Observations about Nosy Nelly

Inference:



Chef Carlos

Owens an Italian catering service out of his home. He frequently delivers homemade lasagnas, pizzas, and other Italian meals to nearby neighbors.

Alibi: He was seen walking along the street near Johnny's home at the time of the robbery while delivering meals. But he claims he was delivering food in someone's home.

2. Observations about Chef Carlos

Inference:



Shrimpy Sid

Lives with his grandmother Nelly next door.
Sid is in the fourth grade but got his nickname
because he is so short.

He was seen about 20 minutes before the burglary buying food inside the 7-Eleven but has no alibi for the time of the robbery. He claims he was in his backyard playing with his dog.

3. Observations about Shrimpy Sid

Inference:



Final Inference

Based on my observations, I infer that

_____ is

the thief. I believe this because



Stidham's Private I's ...Inference Investigators

Scenario #3 The Case of Disappearing Doughnut

When you arrive at home one afternoon from school, your mom tells you she has a big surprise for you. Your father stopped at Krispy Kreme on the way home from work and bought doughnuts for everyone.

You excitedly race to the kitchen because you love Krispy Kreme and eat your doughnut in a hurry. Your father got two doughnuts for everyone and you decide to save the other one for breakfast tomorrow.

The next morning, you go into the kitchen to get your doughnut before the bus comes and discover an empty box! When your mother walks into the kitchen, you tell her your doughnut is missing. She tells you to ask your brother if he knows anything about it. After all, he was up late last night and said he had a stomach ache this morning. Maybe he ate the doughnut while everyone else was sleeping.

Suddenly your dad, who has already left for work, hurriedly comes back into the house. He tells your mother he needs a new coat for work because something white and sticky has gotten on the back of his coat.

Make observations and inferences and help solve the case.



Observations

The Case of the Disappearing Doughnut

First make observations about each suspect and then make inferences based on your observation. Remember, observations are anything we can taste, hear, see, touch, or smell. Inferences are what we think because of our observations.

What observations can you make based on the information that you are given at first?



Achy Albert

Your older brother who is always taking your things. He loves to eat anything with sugar. He doesn't always tell the truth.

Alibi: He claims that although he ate someone else's doughnut last night, it was not yours. When he went to bed, your doughnut was still in the box but was gone this morning when he came downstairs. His stomach hurt when he woke up so your doughnut did not tempt him this morning.

1. Observations about Achy Albert

Inference:



Distinguished Dad

Works for a law office near Krispy Kreme, where he frequently stops after work. You notice that he has doughnut glaze on his face and on the back of his coat.

Alibi: He claims it wasn't him because eating sweets in the morning makes him sick. He says that when he went into the kitchen that morning, the doughnut was already gone.

2. Observations about Distinguished Dad

Inference:



Marvelous Mom

Is always taking care of you and your brother to make sure you have everything you need. She always puts others ahead of herself.

Alibi: You never ask mom about the doughnut because you know she would never take it. She is too thoughtful to take something that doesn't belong to her.

3. Observations about Marvelous Mom

Inference:



Final Inference

Based on my observations, I infer that

_____ is

the thief. I believe this because
